

# INCON

INCON:the newsletter of the Ireland Section of ISA.

## Message from the 2008 Society President



*Ms. Kim Miller-Dunne President of ISA 2008*

### Dear ISA Member:

As you know, these are exciting times in the automation profession, and ISA is right there taking a leadership role as we "Set the Standard for Automation". As ISA President, I want to keep you informed about all of the exciting efforts that ISA is leading. To that end, I would like to share with you three new communication channels I have created to keep the Membership informed and involved with the Society.

First, I have created an ISA Society "State of the Union" Address that reflects my personal impression of the status of the automation profession, and the key relevance of ISA to this industry. I invite you to disseminate this information as you see fit - whether it's reproducing it in your Section Newsletters or sharing with co-workers.

Log in and read my ISA State of the Union Address on our website here

[http://www.isa.org/Content/NavigationMenu/General\\_Information/Leadership\\_Resources/Section/Editor\\_Resources1/Message\\_from\\_the\\_2008\\_Society\\_President.htm](http://www.isa.org/Content/NavigationMenu/General_Information/Leadership_Resources/Section/Editor_Resources1/Message_from_the_2008_Society_President.htm)

Second, I have created a new President's BLOG on the ISA website. Here you will find timely news of major new ISA developments and their impact on the automation profession, along with my personal analysis. The Blog is called "ISA Connections" and is updated every Monday Morning. You can find the Blog here

<http://www.isa.org/connections/>



**Ireland  
Section**

"ISA, the international society for measurement and control, advances the technology and the competence and the careers of practitioners for the benefit of industry and humanity."

Third, I have worked with ISA staff to create a Society marketing and information resources web site. This is a new web page that contains all of the recent ISA online marketing resources.

Here you will find all of the current official ISA marketing brochures with information on ISA products, services and events. You may download PDF versions of these brochures or call the toll-free phone number listed to have copies of any of these pieces sent to you for your own use in your Society promotion efforts. The new resource page is here

**[http://www.isa.org/template.cfm?section=About\\_ISA1&Template=/Content/ContentGroups/MultiUse/Marketing\\_Resources.htm](http://www.isa.org/template.cfm?section=About_ISA1&Template=/Content/ContentGroups/MultiUse/Marketing_Resources.htm)**

I hope you find these resources to be informative and useful to you in your involvement with the Society. I look forward to working with you this year as we continue to work together to move ISA ahead.

**Kim Miller Dunn**  
ISA President



## ISA Technical Presentation PROFIBUS - Using and Diagnosing Networks

The meeting was held on Tuesday 19th February 2008 in Rochestown Park Hotel, Cork and was presented by Mr. Hassan Kaghazchi who is Chairman of PROFIBUS Ireland and Director of the Automation Research Centre at the University of Limerick (UL).



*Mr. Hassan Kaghazchi talking to Mr. Terry McCarthy of Insteco Ltd. with a PROFIBUS Demonstration Kit on the table.*

Hassan covered the basics of PROFIBUS Technology, its benefits to the end users, application areas, and tool & techniques for diagnosing PROFIBUS networks.

Did you know the 90% of Profibus issues are identified as wiring problems? Hassan explained what the real advantages and savings that are gained by using Profibus. He also demonstrated how to plan commission and maintain a successful Profibus application.

The presentation was attended by representatives from Process Control and

Instrument Engineers, Facility Managers and Technicians and Engineers, Production and Maintenance Personnel and others interested in Measurement & Control.

PROFIBUS Ireland is the Irish branch of PROFIBUS International. Its mission is to support and promote the use of PROFIBUS and PROFINET technologies.

There were twenty-one attendees at the presentation. An interactive question time took place at the end of the presentation followed by Tea, Coffee and biscuits.



*Mr. Billy Walsh presenting a plaque to Mr. Hassan Kaghazchi at the PROFIBUS Technical Talk.*



*ISA IRELAND MEMBER RECIEIVES STUDENT AWARD: Award winner Mr. Sean Atkinson (Roche Ireland) receiving the Mature Student Award 2007 from Mr. Russell Hobbs President ISA England Section also included is Mr. Jonathan Love Newcastle Upon Tyne University and Mr. Gordan Childs ISA England Section Secretary*

## DATES FOR YOUR DIARY

Next Technical talk on:

### **Dublin Technical Meeting Predicting the Future.**

Speaker: Mr. Dan Buckley  
of Hanley Controls

Venue: Blancherstown Institute of Technology.  
Tuesday 25 March 2008

### **Athlone Technical Meeting Project Management**

Speaker: Mr. Karl Lawler  
of BioKinetecs

Venue: Cregan Court Hotel  
Tuesday 27 May 2008

### **PLANT TOUR**

#### **Eli Lilly SA, Irish Branch**

Kinsale, Co. Cork

Site Visit to the IE30 Manufacturing Facility  
(Modular Build)

Wednesday 9 April 2004

### **ISA Annual Exhibition**

Venue: Rochestown Park Hotel  
Tuesday 22 April 2008

### **Annual General Meeting**

Thursday 12 June 2008  
Venue: Rochestown Park Hotel  
AGM commences at 20.00hrs

**Contact: Mr. Jim long**  
Technical Chair 01-6465071

## Diageo (Guinness) Brewery Visit

On Friday 22 February 2008 the ISA attended a site tour of the Diageo (Guinness) Brewery located at St. James Gate, Dublin 8.

We assembled at the Storehouse at 13.30 hours; our tour hosts for the day were Brian Furey & Rick Nally – St. James Gate Brewery. The Tour Schedule included

- Overview of the Automation System and SCADA
- Overview of MES with a Demonstration
- Tour Process Areas
- Visit the Brew house, Fermentation Area
- Visit the Tankering Station, Palletiser and Keg Plant
- Visit the Control Rooms
- Product Sampling

Seventeen members took part on the tour. It was excellently presented by Diageo and highly informative and interesting.

We sampled some of the famous “Black Stuff” in the Sky Lounge Bar where we had a 360 degree view of Dublin.

This was a great experience and a great way to start the weekend.



*Mr. Jim Long President ISA Ireland presenting a plaque to Brian Furey of Diageo*



*Hassan Kaghazchi (UL), Tony Mahony (Datalink Communications), Rick Nally (Diageo), Pdraig O'Carroll (Kerry Group), John Power (Powerflow Electronics), Brian Nolan (Organon Ireland) at the Diageo Brewery visit in St. James Gate, Dublin.*



*Jim Long President ISA Ireland presenting a plaque to Rick Nally of Diageo*

# Talented Building Blocks



## Total lifecycle management is a matter of fundamentals.

Installing and managing automation devices is almost elementary when your business is built on Industrial<sup>IT</sup> products from ABB. Any way you arrange them, these “information enabled” components play a role in building new enterprise value.

We start with the industry's broadest range of instruments, analyzers, controls, low voltage products, drives, motors, power electronics, robots, and more. Then we enable and certify every device to Industrial<sup>IT</sup> open standards: Asset documentation, configuration and connectivity tools, and lifecycle support resources are bundled into one powerful software shell for “plug and produce” installation and operation.

Whether you deploy them individually or integrated across the plant, ABB automation technologies provide the foundation you need for asset efficiency, transparency, and lowest lifecycle cost. Our customers, with over US\$ 100 billion of installed solutions worldwide, provide the proof.

To start arranging your own compatible enterprise building blocks, visit [www.abb.com/automation](http://www.abb.com/automation).



## INFO from INTECH

The following are some articles that are covered in INTECH the ISA member's magazine. More details on the full articles can be found at : [www.isa.org/intech/2008](http://www.isa.org/intech/2008)

### Petrochem sees triple

Constant trips in an oxidation reactor can mean a pain in the pocketbook and in production quality. One Indian petrochem plant saw upgrading its relay-based interlock system to triple redundancy as an answer.

### Chem teams mix potent antidote

An increase in security throughout all industries today is leading the chemical industry, in particular, to ramp up strategies and information sharing.

### Buying a vision sensor:

#### 10 questions you must ask

Here are the 10 most problematic conditions vision sensors face, reasons why they often occur, and the best ways to evaluate a vision sensor's performance.

### Do you really want to?

The scenario: Following a recent internally initiated audit of your facility's SIS, you realize your systems do not meet the "grandfather clause" requirements described in ANSI/ISA 84.01.00. Now what?

### Brewery taps tighter control

A small brewer's temperature control system upgrade allows greater productivity, flexibility. Implementing this automation system-in-a-box made Bell's Brewery one of the first craft brewers to put in a system that rivals the big boys.

### All in one glass

When it comes to level indicators, accuracy is paramount. Since glass plus metallic components in high temperature equals high maintenance, one electric company solves its problem with an alternate approach.

### Bringing pH measurement systems up to date

It is necessary in the design of a pH control system to determine the size of the final control elements, particularly that element determining the flow of reagent.

## MEMBERSHIP

In order that the ISA Ireland section records are accurate and up-to-date, it is important to let me know if your information has changed. This will enable us to make sure that all correspondence from the Ireland section and the USA will reach you at the proper destination in time.

Euro Rates for ISA Membership:

Regular Membership	€75.00
Senior Membership	€75.00
3 year Student Member	€15.00
Division Membership	€7.00

Two year regular/ senior membership  
€138.00 (save €12.00)

Three year regular/ senior Member  
€200.00 (save €25.00)

### Mr Eoin O'Riain

Membership Chair

Tel: 087-2663282

E-mail : [readout@iol.ie](mailto:readout@iol.ie)



**ISA committee for 2007/ 2008.**

**Front row L to R:** Brian Nolan, Jim Long President ISA Ireland Section, Michael Meade, Terry McCarthy  
**Back row:** Declan Lordan ,Brian Curtis, Billy Walsh, Kevin Dignam, **Missing from Photograph:** Declan Fleming, Bob Shine, Eoin O'Riain, Dave Peyton, David O'Brien, Mark Radford.

**2006/ 2007 COMMITTEE.**

**Mr. James Long** - President James Connolly Hospital, 01-6465071

**Mr. Michael Meade** - President Elect/ Secretary, DPS Engineering, 021-7305030

**Mr. Declan Fleming** - Treasurer Schering Plough 021-4329538.

**Mr. Brian Nolan** - Past President O'Sheas Electrical 021-4510740

**Mr. Billy Walsh** - Education. U.C.C., 021-4902144.

**Mr. David O'Brien** - Standards & Practices. DPS Engineering 021-4702767

**Mr. Terry McCarthy** - Exhibition Insteco Ltd, 021-4883798

**Mr. Eoin O'Riain** - Membership Readout, 087-2663282

**Mr. Kevin Dignam** - Honours & Awards, DPS Engineering 021-7305034.

**Mr. Brian Curtis** - Newsletter DPS Engineering 021-4702939

**Mr. Eoin O'Riain** - Web Site Readout, 087-2663282

**Mr. Bob Shine** - Historian (Retired), 021-4543722

**Mr. Dave Peyton** - Student liaison Blanchardstown Institute of Technology, 01-8854550

**Mr. Mark Radford** - Committee Measurit Ltd, 01-2768104

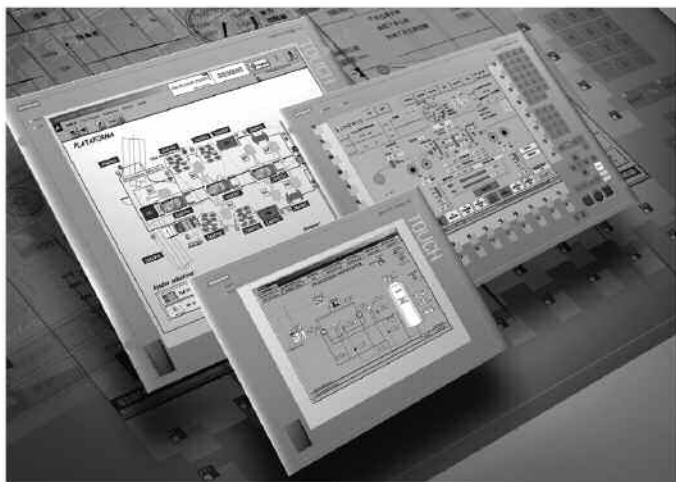
**F E E D B A C K**

Section Committee Members can be contacted at:  
 ISA Ireland Section P.O.Box 203 Eglinton St., Cork  
<http://www.iol.ie/~isaire>    [Info@isa.ie](mailto:Info@isa.ie)    [Membership@isa.ie](mailto:Membership@isa.ie)

*The views expressed in INCON are not necessarily those of ISA or ISA Ireland*

# Siemens Panel PCs for harsh industrial use

Siemens Automation and Drives (A&D) has developed two new Panel PCs for harsh industrial use: the especially compact Simatic Panel PC 677, and the flexibly expandable Simatic Panel PC 877. There are several front



designs available for both device types, offering 12" and 15" touch or key operation as well as a 19" touch version. The PC 677 replaces the predecessor model PC 670, and the PC 877 replaces the PC 870.

The new Panel PCs are equipped with powerful processors and are suitable for demanding visualisation tasks and for processing large volumes of data. Intel Pentium M processor is available for PC 677 and Intel Pentium 4 processor for PC 877. The remaining setup is scalable with a main memory configuration up to 2GB, hard disk drives up to 80GB and optical drives, 110-230V AC or 24 V DC power supplies, and the Windows 2000 or XP Professional operating systems. For higher system availability and data security, there is an optional RAID1 mirror disk system, supported by the onboard RAID controller on the PC 677, and the integral vibration-suppressed double hard disk module.

**douglas**  
CONTROL & AUTOMATION

National Distributors for Siemens Automation Products  
and Stahl Ex Lighting, switch gear and remote I/O

Neptune House, Victoria Road, Cork. Tel: 021 4317001 email: [info@douglas-esl.ie](mailto:info@douglas-esl.ie) [www.douglas-esl.ie](http://www.douglas-esl.ie)